



FANTASTIC PENTHOUSE CLOSE TO SANTA CATALINA

EXCELLENT OPPORTUNITY TO PURCHASE A PENTHOUSE IN A WELL-MAINTAINED BUILDING IN A CENTRAL LOCATION IN PALMA.

720,000€

SE293 | PALMA DE MALLORCA



4



3



145M2



Description

The penthouse is situated on the 8th floor with no direct neighbors in an antique building. The entrance area of the building has recently been completely renovated and has an elevator. The entrance area of the apartment is spacious and offers plenty of space for storing clothes, bags, prams, etc. The area has an open design and after a few steps you will find yourself in the bright living/dining area with the open, fully equipped kitchen (except for the refrigerator). The living area leads to the 80m2 terrace, which stretches almost around the entire apartment and offers plenty of space for chill-out areas and BBQ evenings. The terrace offers a view of the city and on a clear day of the sea. Next to the open kitchen with a kitchen island there is a utility room with space for a washing machine, dryer and technical appliances. The penthouse has 4 bedrooms and 3 bathrooms. The master bedroom has an en-suite bathroom and an open, walk-in closet. The apartment was completely renovated in 2016.

In the building next door there is the possibility to rent a parking space.

Features

terrace, elevator, fitted wardrobes, utility room, central heating, water softener, osmosis water filter, fitted kitchen with electrical appliances, induction hob Balay, extraction hub Bosch, 2 bathrooms with shower, 1 bathroom with bathtub, ceiling fans, pre-installation air conditioning

WRITE

info@sophisticated.immo

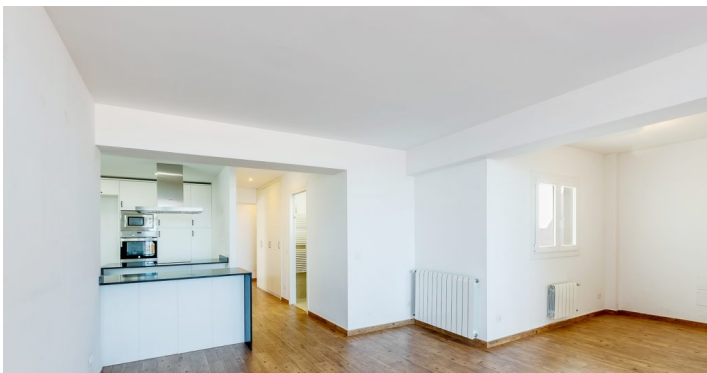
MEET

Calle Pursiana, 21, 07013 Santa Catalina, Palma

CALL

+34 871 041 235

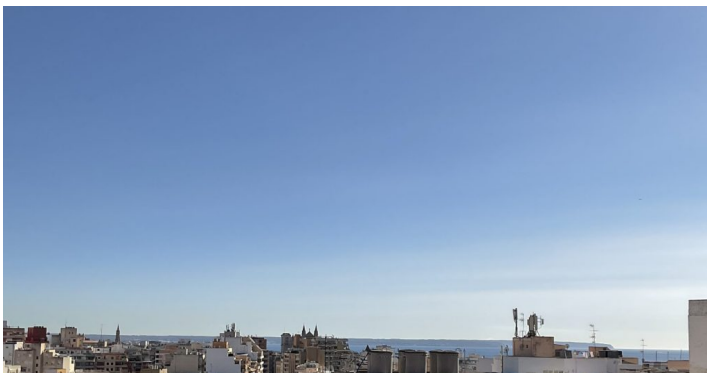
www.sophisticated.immo



WRITE
info@sophisticated.immo

MEET
Calle Pursiana, 21, 07013 Santa Catalina, Palma
www.sophisticated.immo

CALL
+34 871 041 235



WRITE
info@sophisticated.immo

MEET
Calle Pursiana, 21, 07013 Santa Catalina, Palma
www.sophisticated.immo

CALL
+34 871 041 235